



## COMPANY PROFILE

We are Distributor and system integrator for



**KAMA FACTORY**  
**Electric Panel Building**

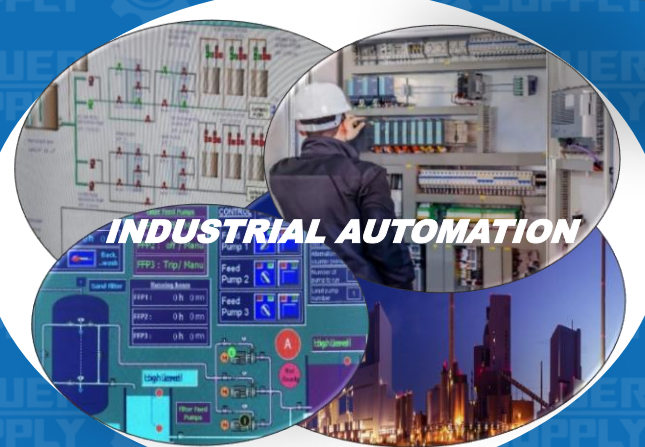
### ENERGY MANAGEMENT



### MOTORS & DRIVES



### INDUSTRIAL AUTOMATION



# CONTACT INFORMATION



[www.powersupply.sa](http://www.powersupply.sa)



[info@powersupply.sa](mailto:info@powersupply.sa)



Riyadh - KSA - CR/Exit 15  
PO: 14215



Tel: 0112355166



Fax: 0114455166



Mobile: +966 501467993



# AGENDA

**01**

Overview

**02**

Mission

**03**

Vision

**04**

Objectives

**06**

Our Certificates

**07**

Our Customers

**08**

ENERGY MANAGMENT

**09**

INDUSTRIAL Automation

**10**

MOTORS & DRIVES

# Overview



Power supply is growing up est., in the kingdom of Saudi Arabia, established officially under Ministry of commerce and investment.

We introduce ourselves as a solution, spare parts and services provider for Automation and electrical systems in the sectors of energy management , industrial automation and motion control systems



# Mission

“

Power Supply sales mission is to serve its customer by fitting their needs and ensuring on-time target delivery and installation of equipment. In the foreseeable future, this mission will interpret as a mandate to build market support for the clients.

Power supply is devoted to deliver well-engineered Electrical and control Systems that enable our customers to achieve their production targets efficiently and effectively and aspire to attain ultimate customer satisfaction.

”



# VISION

“

At Power Supply, we believe that power management and control system of any production facility is the key for a successful and profitable production, our Industrial Automation Solutions and Electrical Systems are designed and implemented in accordance with this belief and maintained by our commitment to support our customers throughout the project life cycle. Increase our market niche in the KSA.

”

# OBJECTIVES

“

to place Power Supply, to be the preferred power management and Industrial Automation Solutions Provider with our existing and potential customers and markets by delivering optimal solutions and maintain pre-sale and after-sale customer support and customer satisfaction as per the standards and requirements set by the company aiming to annually increase our market niche in the KSA.

”

# OUR Certificates



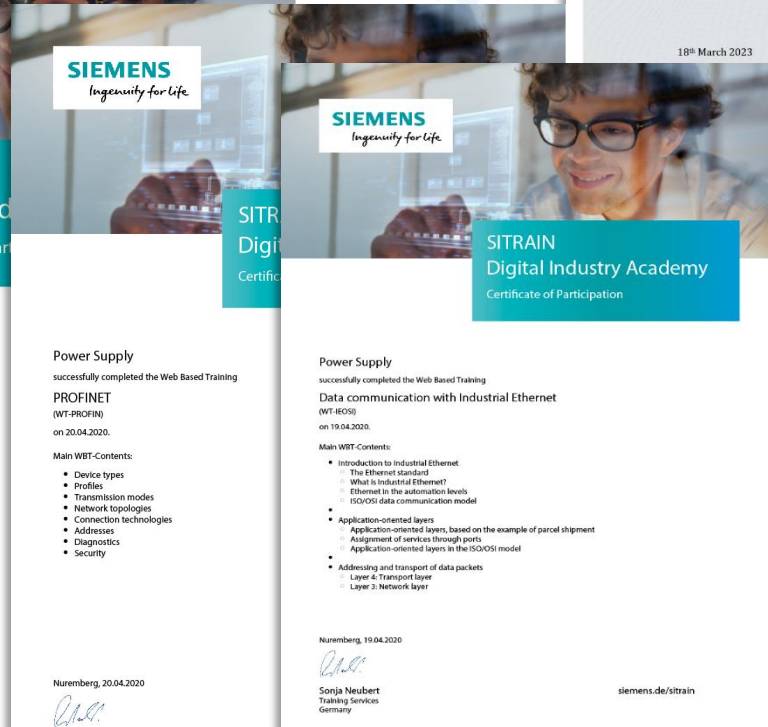
Power Supply  
successfully completed the Web Based Training  
Process control engineering  
(WT-PZE)  
on 23.04.2020.

Main WBT-Contents:

- Knowledge of the process
- The automation hardware
- The automation hardware
- Operator control and monitoring
- Final test

Nuremberg, 23.04.2020

Sonja Neubert  
Training Services  
Germany



Power Supply  
successfully completed the Web Based Training  
PROFINET  
(WT-PROFIN)  
on 20.04.2020.

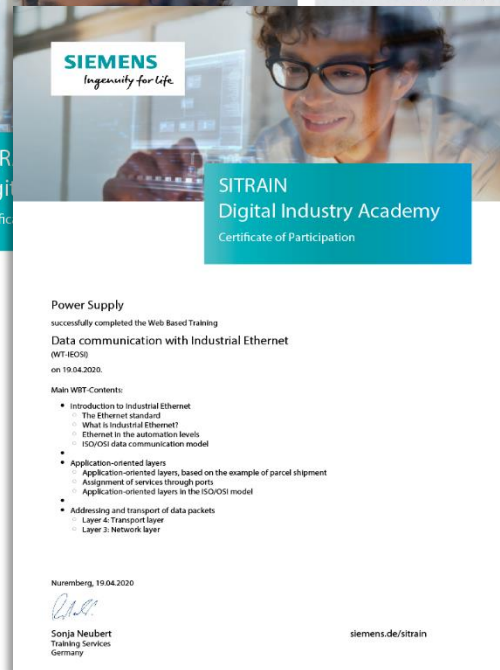
Main WBT-Contents:

- Device types
- Profiles
- Transmission modes
- Network topologies
- Connection technologies
- Addresses
- Diagnostics
- Security

Nuremberg, 20.04.2020

Sonja Neubert  
Training Services  
Germany

siemens.de/sitrain



Power Supply  
successfully completed the Web Based Training  
Data communication with Industrial Ethernet  
(WT-IEOS)  
on 19.04.2020.

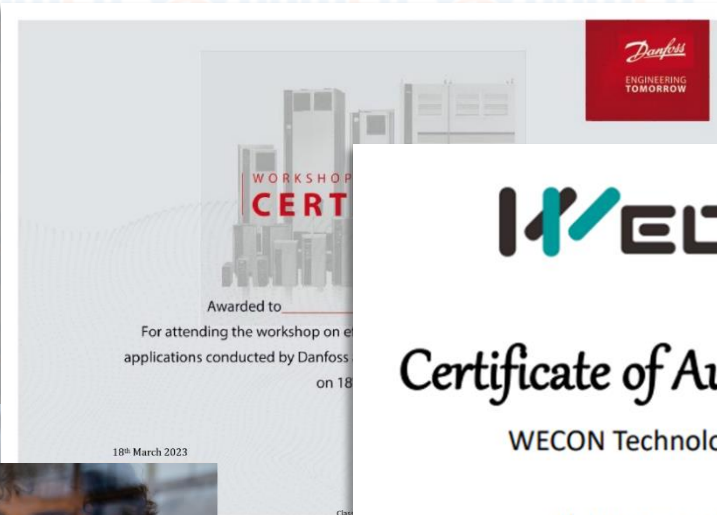
Main WBT-Contents:

- Introduction to Industrial Ethernet
  - The Ethernet standard
  - What is Industrial Ethernet?
  - Ethernet in the automation levels
  - ISO/OSI data communication model
- Application-oriented layers
  - Application-oriented layers, based on the example of parcel shipment
  - Assignment of services through ports
  - Application-oriented layers in the ISO/OSI model
- Addressing and transport of data packets
  - Layer 4: Transport layer
  - Layer 3: Network layer

Nuremberg, 19.04.2020

Sonja Neubert  
Training Services  
Germany

siemens.de/sitrain





# Our Customers

We proudly serving the below customers



المحترفون المتطورة  
advance professional



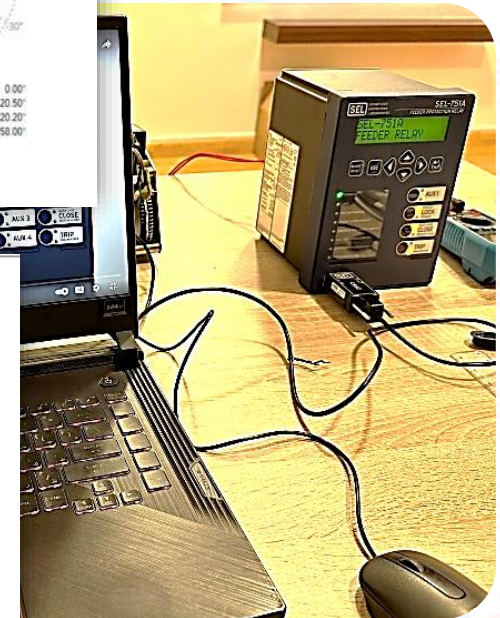
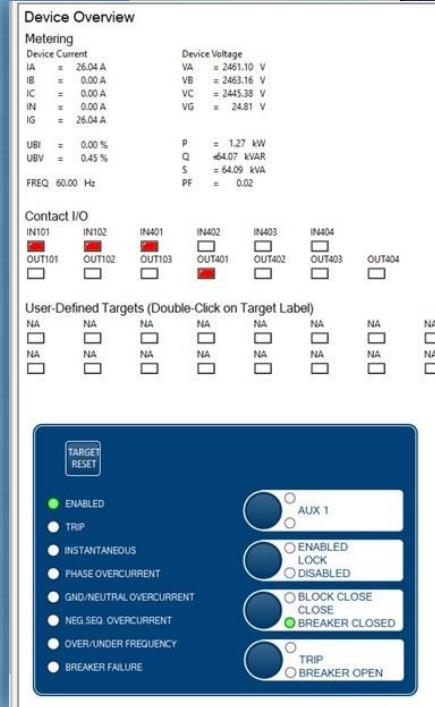
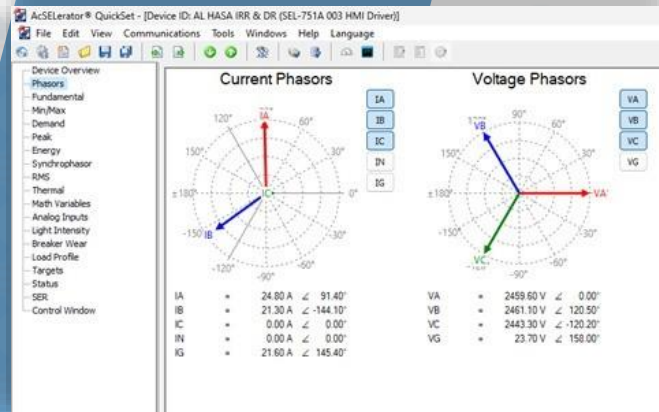
ثبات  
THABAT



مجموعة سدر  
SEDER GROUP



# ENERGY MANAGEMENT



**Our service cover wide range of industries applications, as follows:**

**Energy Management:**

- Sub-stations automation
- Switchgear protection relays
- Transformers protection relays
- we offer also off-grid solar power kits for remote installations.

**We provide engineering, documentation, load testing, FAT & SAT for supply:**

- Motor control center (MCC)
- Low voltage distribution panels
- Synchronizing Panels
- Oil & gas supply and distribution
- ATS Panels
- Power Factor Correction Panels
- Local Control Station (LCS) Boxes
- MV/LV complete package substations

# PLATFORMS

- We offer our clients the control platform of their choice.
- we work closely with the clients to guide them in making the most suited selection for their specific needs.
- We offer solutions based on the state of art technologies.





## WORKSHOP FACILITY

---

- We provide full integrated testing facility to our customers to conduct 100% Factory acceptance test. We have stringent quality control process to ensure that all incoming and outgoing products are tested to the project needs.
- We believe in punctuality and work hard to meet the timeline for the final delivery of panels and for which we have been receiving appreciation from our clients.

## DESIGN CAPABILITIES

---

Our employees have technical /engineering background in disciplines such as electronic, instrumentation, and process

The following are the various processes that we follow in executing a project.

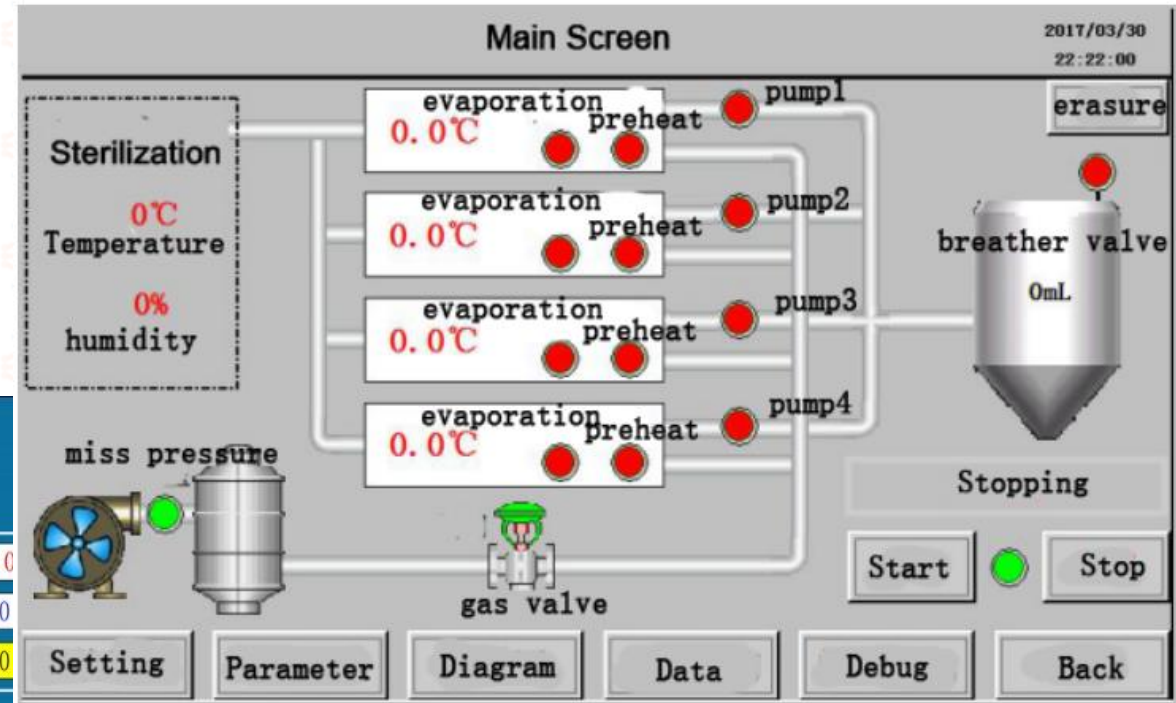
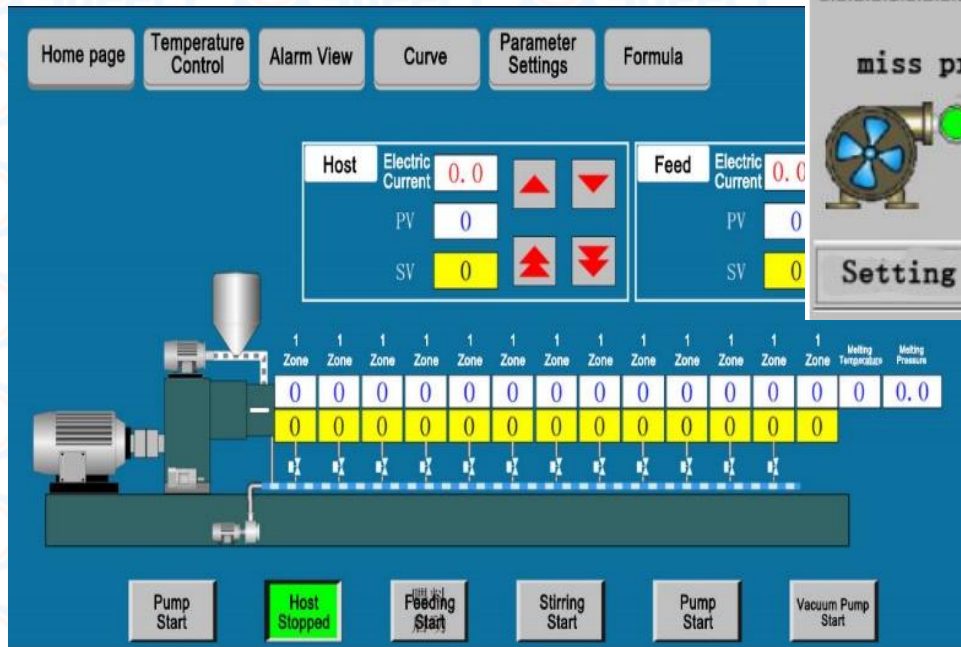
- System study
- Design Engineering & Detailed Drawings
- Procurement
- Manufacturing / Integration
- Inspection & Testing
- Installation
- Commissioning
- Training
- Service and maintenance contracts

# INDUSTRIAL AUTOMATION



# HMI applications

- Water and wastewater treatment systems
- Automatic sterilizers
- Temperature control systems
- Process equipment machines





# INDUSTRIAL PROCESS AUTOMATION SOLUTIONS:

- We offer design and assembly of industrial control systems for projects with such requirement.
- PLC panels, Control panels,
- Power Supply offers Supervision of Installation, Testing & Commissioning at site.

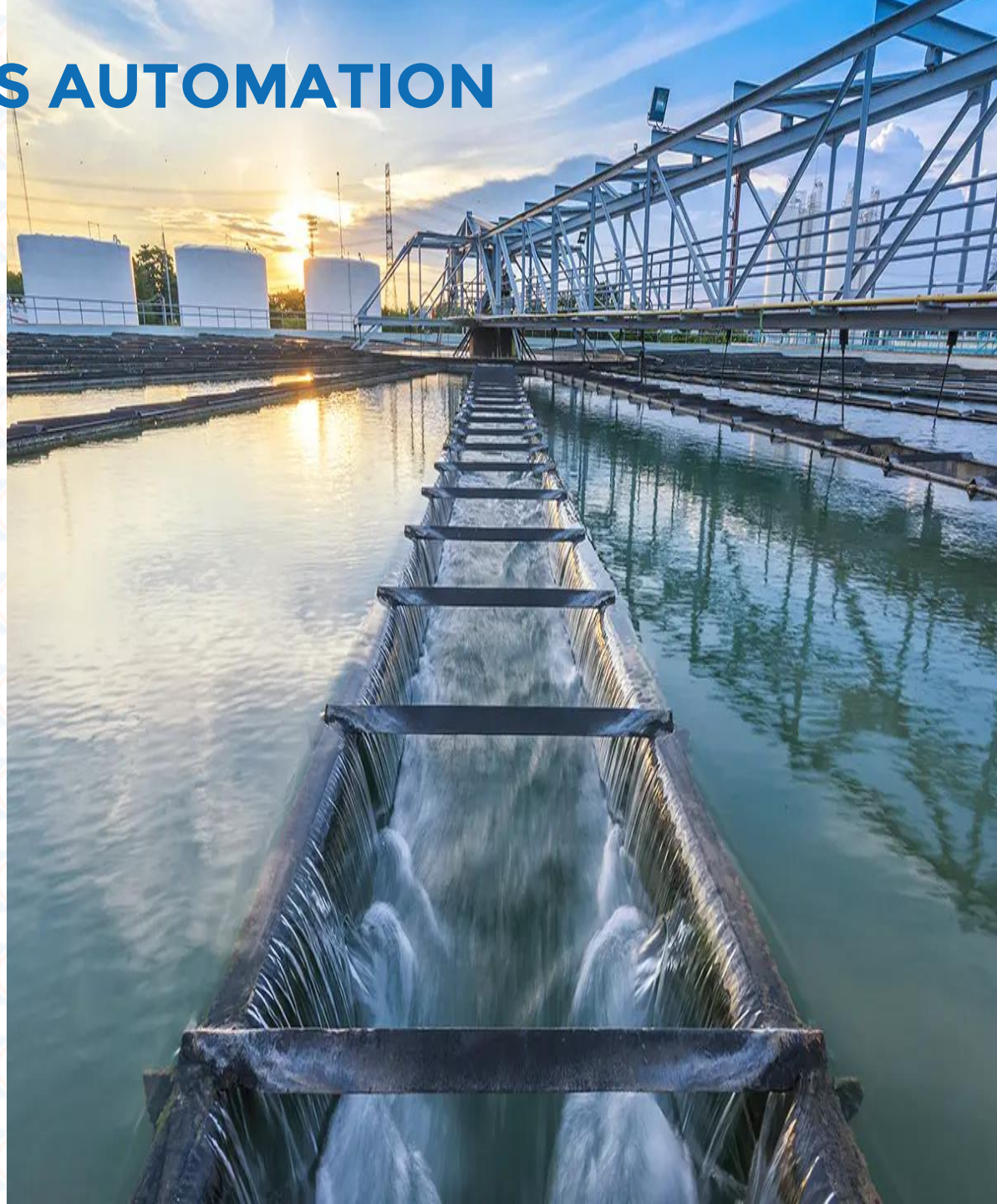




# INDUSTRIAL PROCESS AUTOMATION SOLUTIONS:

---

- Power supply offers turnkey integrated industrial automation solutions based on state-of-the-art PLC, HMI and SCADA technologies for a wide range of industrial automation applications including manufacturing, for utilities, water & wastewater treatment and service industries.
- We offer complete Industrial Communication Networks Solutions based on a wide range of The-Shelf products. Our offer includes Rugged & High reliable solutions for critical infrastructures.
- Our ability to build the electrical and control panels complements our Automation solutions services and reassures the quality of our product while giving our product a high level of flexibility.



# TURNKEY PLC/SCADA SOLUTIONS

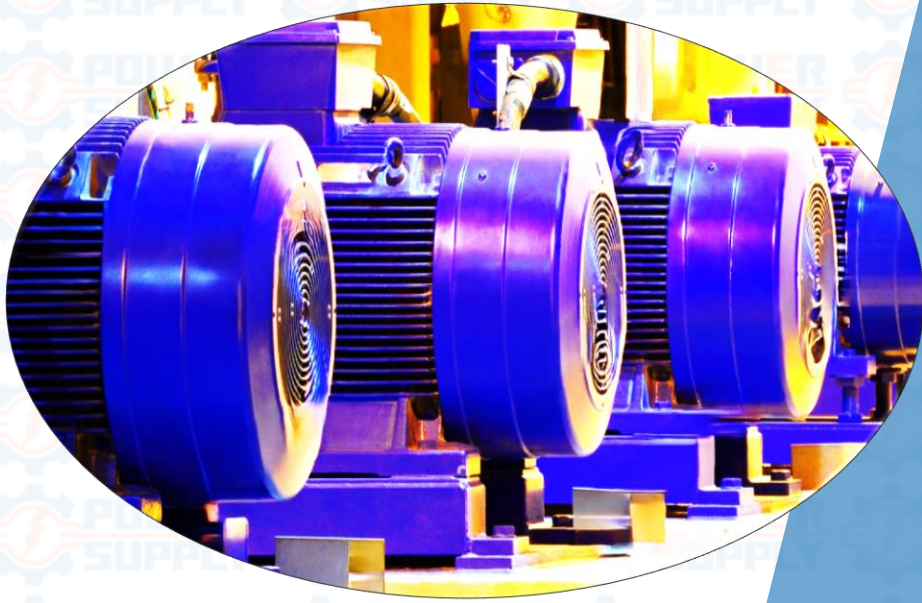
We take full responsibility for the engineering, procurement of control hardware, and instruments, control panels fabrication, PLC/SCADA software development, field installation, commissioning, and startup of industrial control systems. Our project execution goes through the following detailed design steps:

- System Architecture Drawings
- Communication system Drawings
- IO Point List
- Instruments List
- Functional Design Specifications (FDS)
- Control Panel Drawings
- Instruments Selections
- I/O Wiring Drawings
- HMI Screens Design
- Data Acquisition Requirements
- Procurement of Control Hardware and Instruments
- Control Panels Assembly
- Factory Acceptance Test (FAT)





## MOTORS & DRIVES



## VB Series

The **VB Series VFD** is a new high-performance vector frequency inverters to serve general-purpose that further enhances stability and reliability through hardware upgrades and optimization. It is best choice for complex applications.

1. SVC Control Mode: Maximum Output Frequency 320Hz
2. VF Control Mode: Maximum Output Frequency 1000Hz
3. Excellent Braking Function
4. Superior Control Performance. Optimized PID function
5. Random carrier Function
6. Short-circuit protection in power-to-GND
7. Support speed mode and torque mode, low speed with high torque output

Single-phase 220V: 0.75 - 2.2KW

Three-phase 220V: 0.75 - 15KW

Three-phase 380V/415V/440V: 0.75 - 400KW





## VM Series

The **VM series VFD** is an economic type VFD which is smaller size, easier commissioning and the flexibility makes it easy to be adjusted in parameters to control various mechanical equipment.

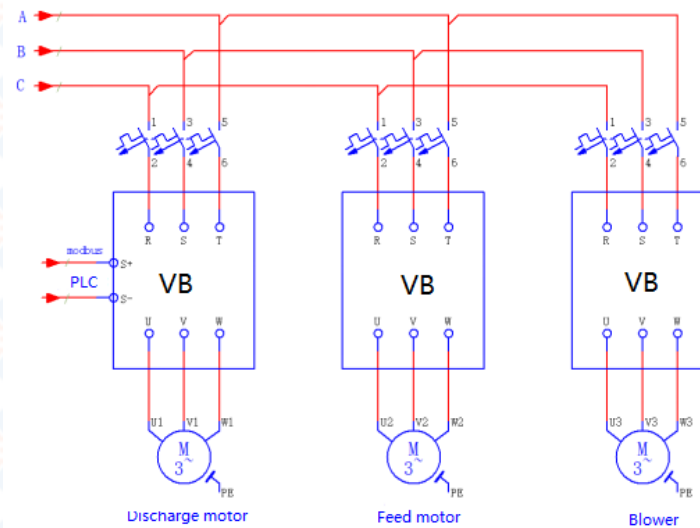
1. Small size, saving installation space;
2. Compatible with guide rail, easy and quick to install;
3. Multiple protection mechanisms, safe and secure;
4. 0-400Hz output frequency range;
5. 150% overload for 60s.

Single-phase 220V: 0.75 - 2.2kW

Three-phase 220V: 0.75 - 15kW



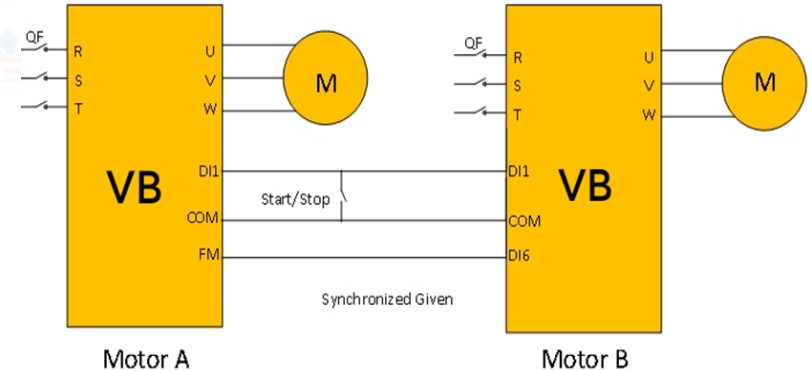
# VFD application in Drying Machines



## VFD Solution Advantages:

- Intelligent feeding and discharging.
- The feeding speed can be adjusted according to the actual heating situation.
- Protect the motor with various protections such as overcurrent.
- Variable frequency speed regulating process cycle.

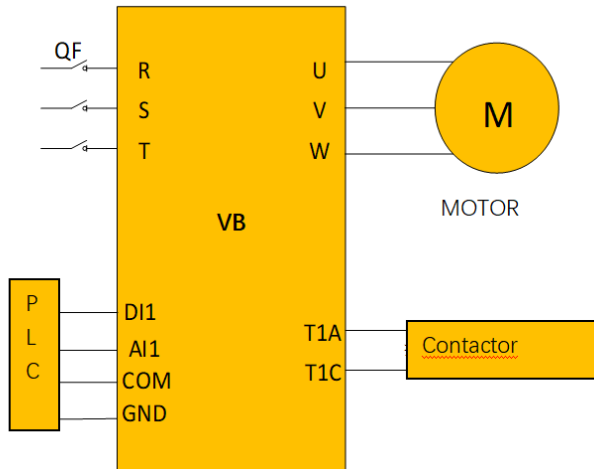
# VFD application in pumping stations



## VFD Solution Advantages:

- PID process control.
- Pumps automatic alternation.
- Energy saving during less demand.

# VFD application in Air fan cfm control

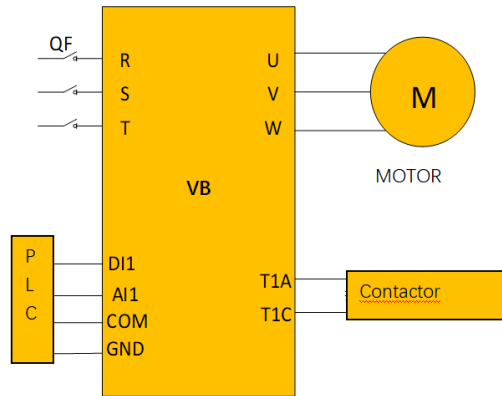


## VFD Solution Advantages:

- Preset reference frequency.
- Can connect with BMS system to adjust air flow , Diff Press. , etc



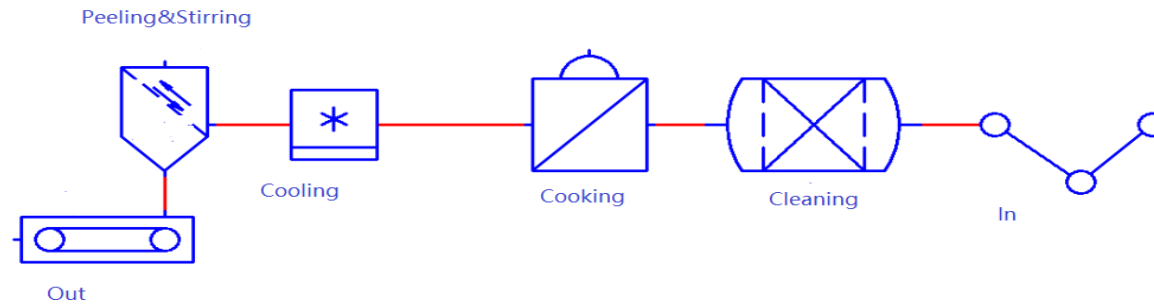
# VFD application in industrial Blower flow control



## VFD Solution Advantages:

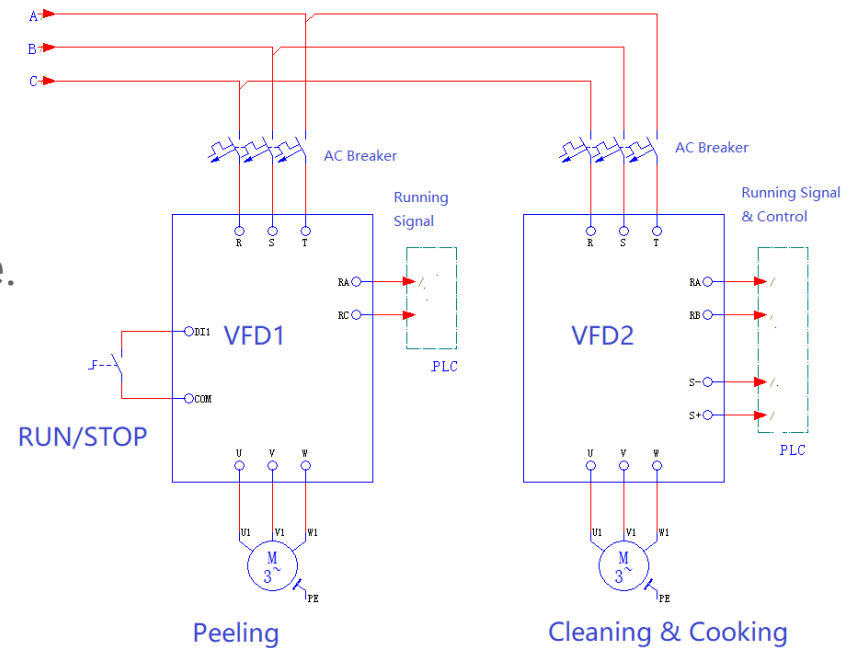
- Providing suitable torque during startup.
- Process Dissolved oxygen control.

# VFD application in food production speed control



## VFD Solution Advantages:

- Data bus suitable for machine interface.



# VFD application in steel uncoiling machines



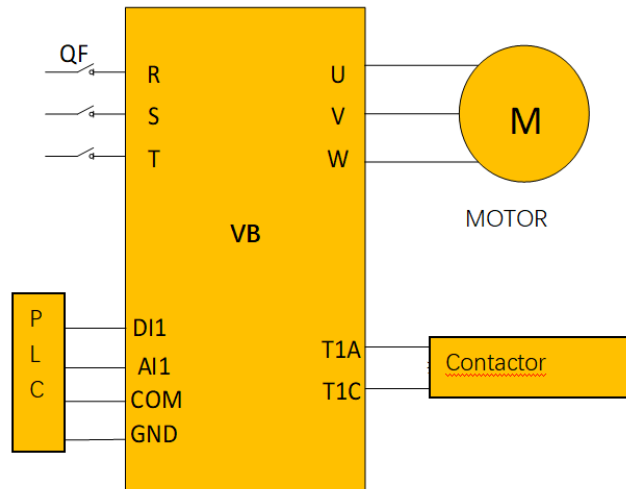
## VFD Solution Advantages:

- Data bus for machine interface.
- Jogging frequency setting for interrupting commands





# VFD application in process mixers



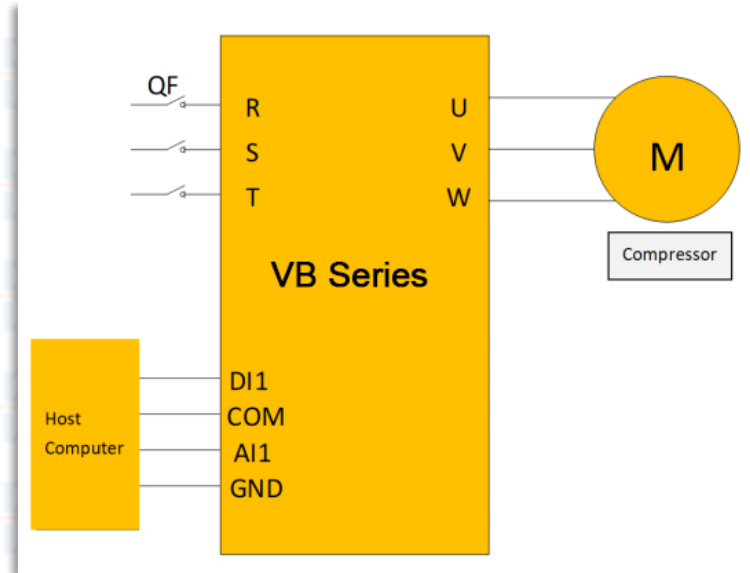
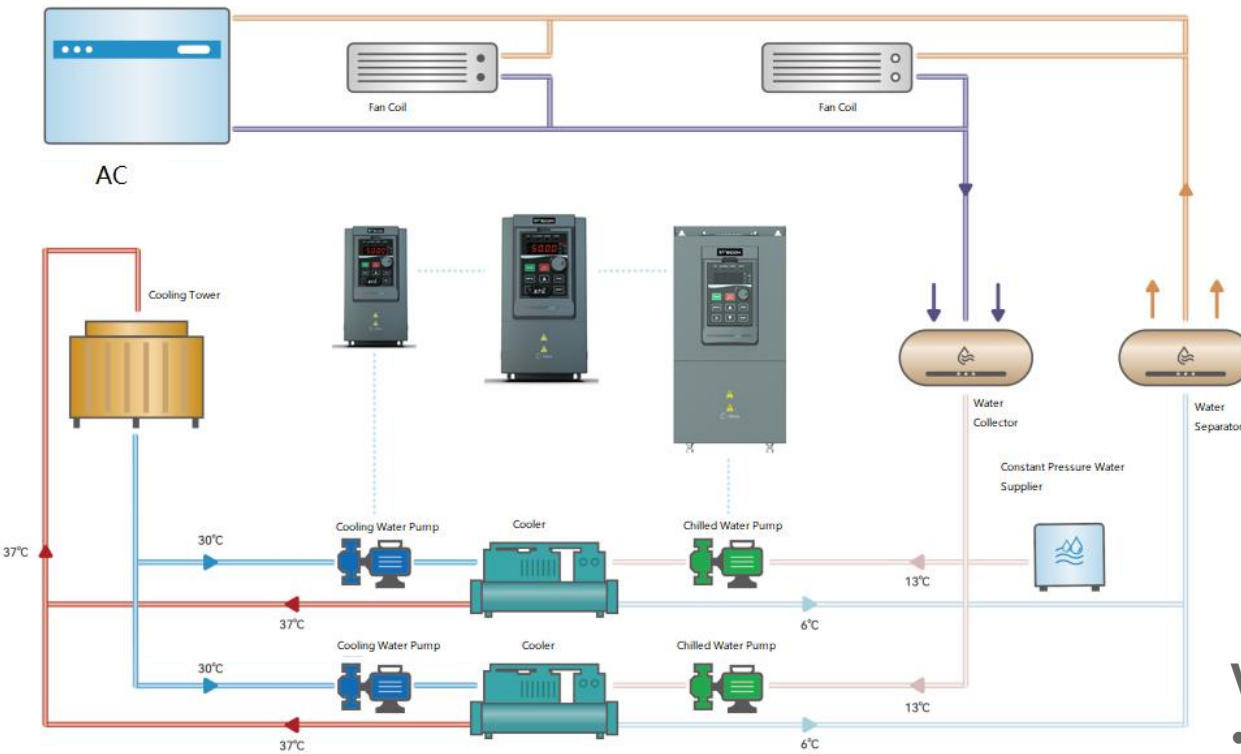
## VFD Solution Advantages:

- Data bus for machine interface.
- Jogging frequency setting for interrupting commands



# VFD application in chilled water circuit pumps

Central Air Conditioning Water Supply



## VFD Solution Advantages:

- Preset frequencies for circulating pumps.

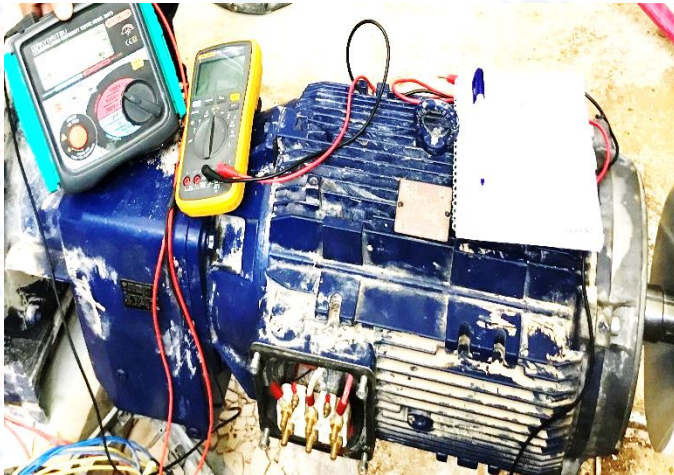
# Industrial Motors services

Supplying

Installation

Commissioning

maintenance







# PANEL BUILDING KAMA FACTORY

---



**AL KHARJ INDUSTRIAL CITY**

**CR. 101151838**



**Tel: 0112355166**



**Mobile: +966 501467993**

# INTRODUCTION

We, KAMA factory from AL joaidi group introduce ourselves as a new growing factory in the field of manufacturing LV electrical panel boards in the kingdom of Saudi Arabia, established officially in 2023 registered under Ministry of Industry License No.C.R 1011151838. KAMA commitment to ensure reliability and safety for growing up to be one of the leading suppliers for all sectors, commercial and industrial in Saudi Arabia, the distinctive location, more than 2000m2 of working space, looking forward to have up to date machinery and equipment used to manufacture products that are up to the Saudi and international standard requirements.

## Our Key Strategy

Customer satisfactory is the top for Saudi panels, the focus on high performance products such as EATON, ABB and Schneider , Mitsubishi , etc., gives us market leadership with a reputation of unrivalled support services.



**KAMA Factory For Panel Building**

## LOW VOLTAGE SYSTEMS

### KAMA LOW VOLTAGE SWITCHBOARD

We have wide range of products in Low Voltage Systems which are Type Tested to latest industry standard IEC- 61439 & IEC 62271-202. which are the following:

Main Distribution Boards (MDB).

Sub Main Distribution Boards (SMDDB).

Final Distribution Boards (Load Centers).

Synchronizing Panels.

ATS Panels.

Motor Control Centers (MCC).

HVAC Control Panels (VFD & Soft starter based).

Pump Control Panels.

Local Control Station (LCS) Boxes.

Power Factor Correction Panels.

Lighting & Emergency Lighting Control Panels.







FOP control panel

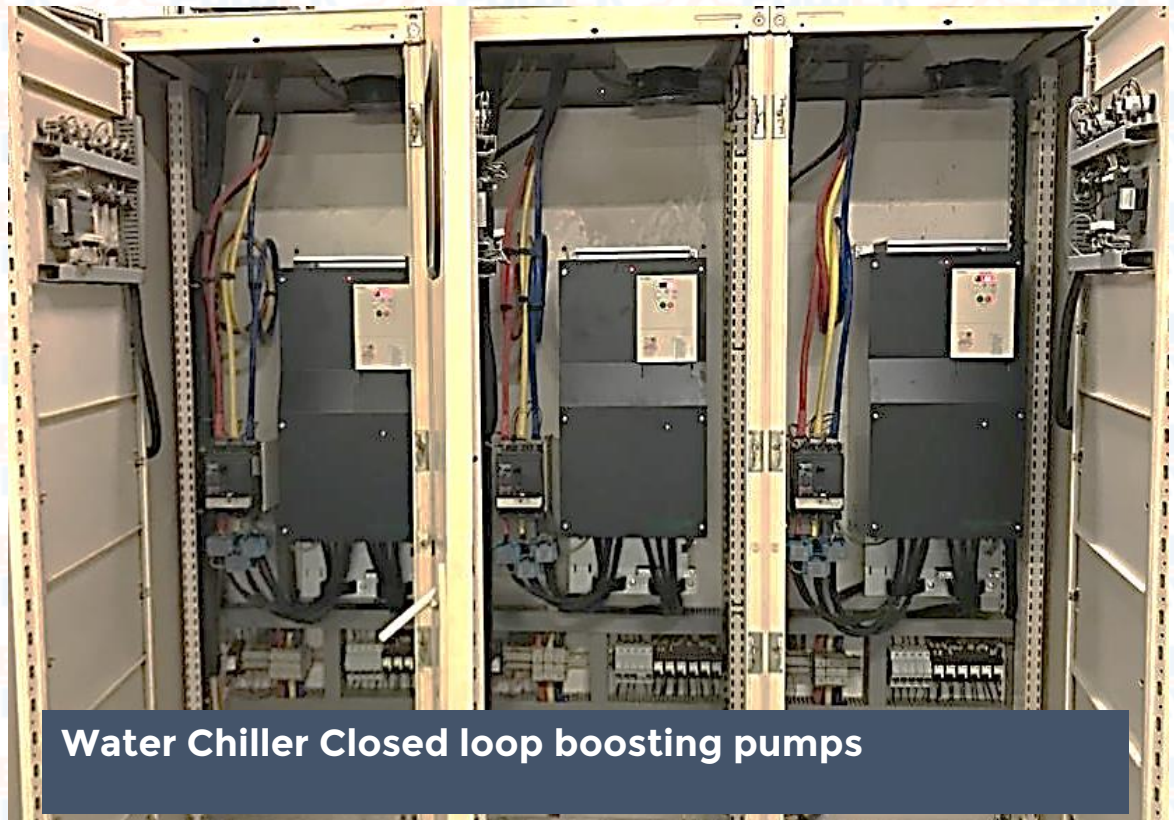


Pumping system  
advanced control  
panel



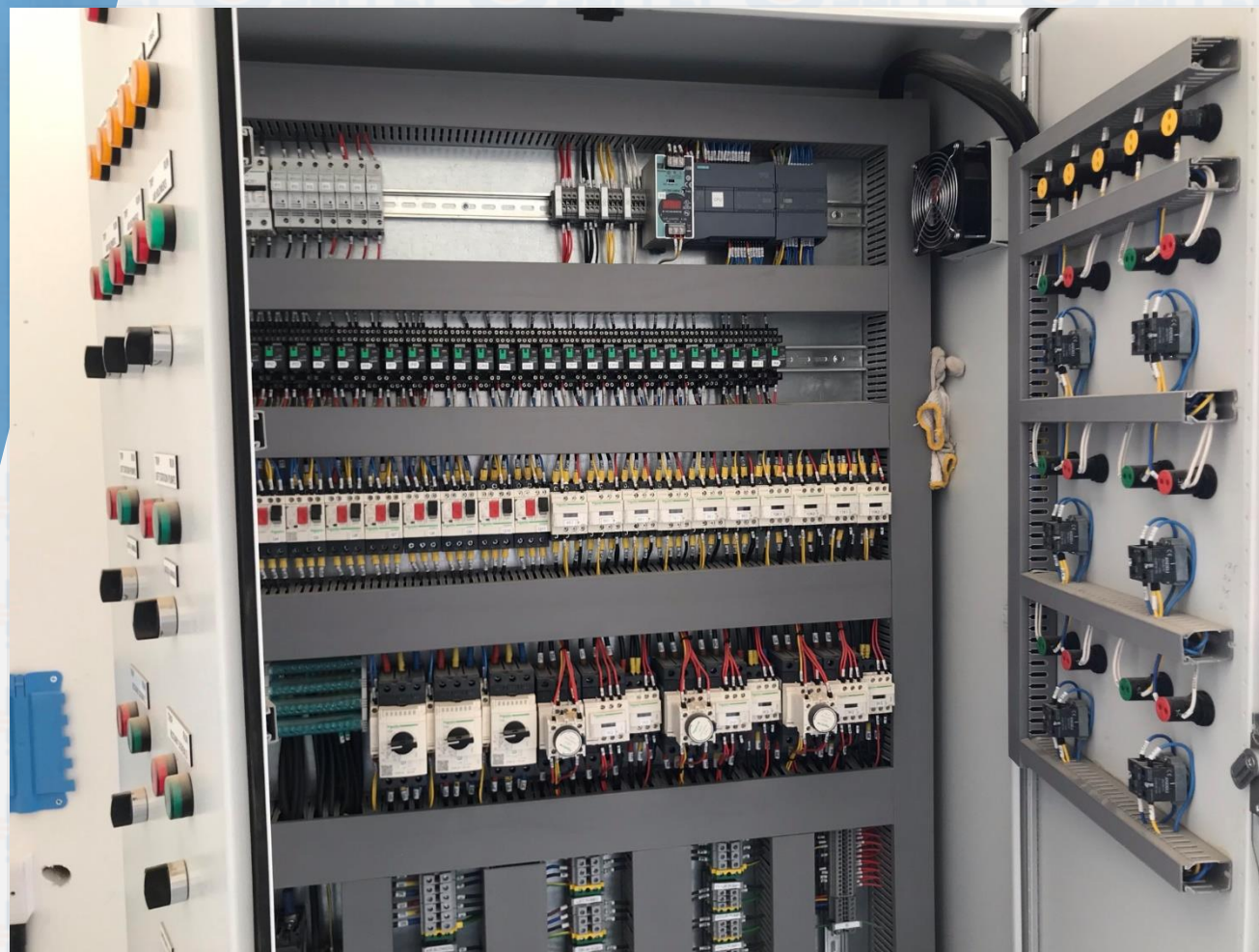
RO system control panel





Water Chiller Closed loop boosting pumps





STP system control panel



# ATS & MDP

